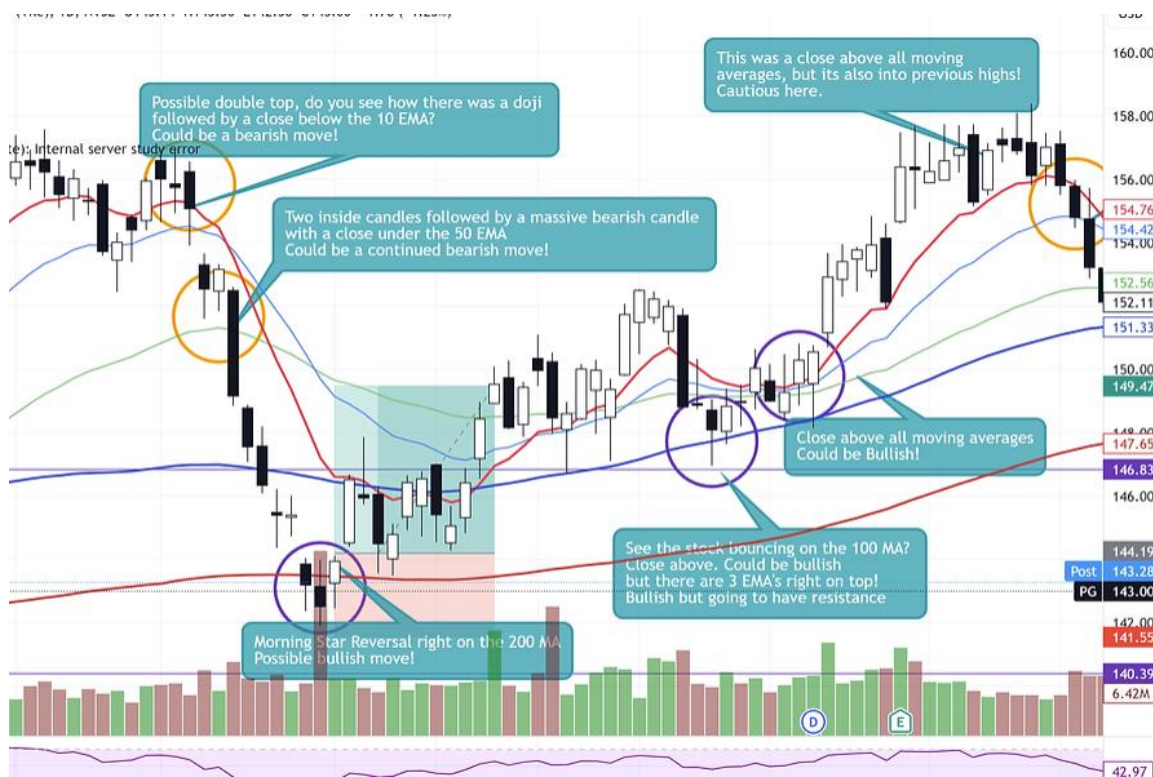


Simple Steps to Set Up Your TradingView Like \$Maxwell

Maximize Your Trading Edge Using Moving Averages:



Unlocking the Power of Charts:

If you've ever wondered how seasoned traders like me leverage chart setups to gain an edge in the market, you're in the right place. I've been using TradingView for years, refining my charts to streamline my trading process. While I do have TradingView's premium plan (yes, it's worth every penny), you can still replicate my setup. **This guide will walk you through adding moving averages, my favorite indicator, to your TradingView so your charts look like \$Maxwell's charts.**

Why TradingView?

TradingView is my go-to for charts because it offers the flexibility, alerts and tools necessary for serious traders. If you don't already have TradingView, I'd appreciate it if you used my affiliate link to sign up.

Not only will you be supporting my work (with no additional cost to you), but if you eventually go for a paid plan, we'll both earning up to \$15 as a bonus! [Sign up here](#)

I use 2 types of Moving Averages:

1. Simple Moving Average (SMA) for Long-Term Trends

- **SMA 100 and 200:** These are equal-weighted averages that give you a broad view of market trends.

- [Learn more about SMA](#)

2. Exponential Moving Average (EMA) for Shorter-Term Trends

- **EMA 10, 20, 50:** These give more weight to recent price data, helping you react quicker to market changes.

- [Learn more about EMA](#)

Why These Indicators?

I combine these moving averages with support/resistance levels, technical patterns, and other indicators to craft what I call "high probability" trades. Remember, no indicator works all the time, but these have been reliable tools in my toolkit for decades. For an in-depth look at how I use moving averages, check out my [blog post](#) where I break down my process with an example.

My Moving Averages and Colors:

These are the moving averages and colors you see on all my charts:

Vol	2.086 M
MA 100 close 0	150.07
MA 200 close 0	133.76
EMA 10 close 0	163.84
EMA 20 close 0	164.76
EMA 50 close 0	160.76
Elliott Wave Absolute	

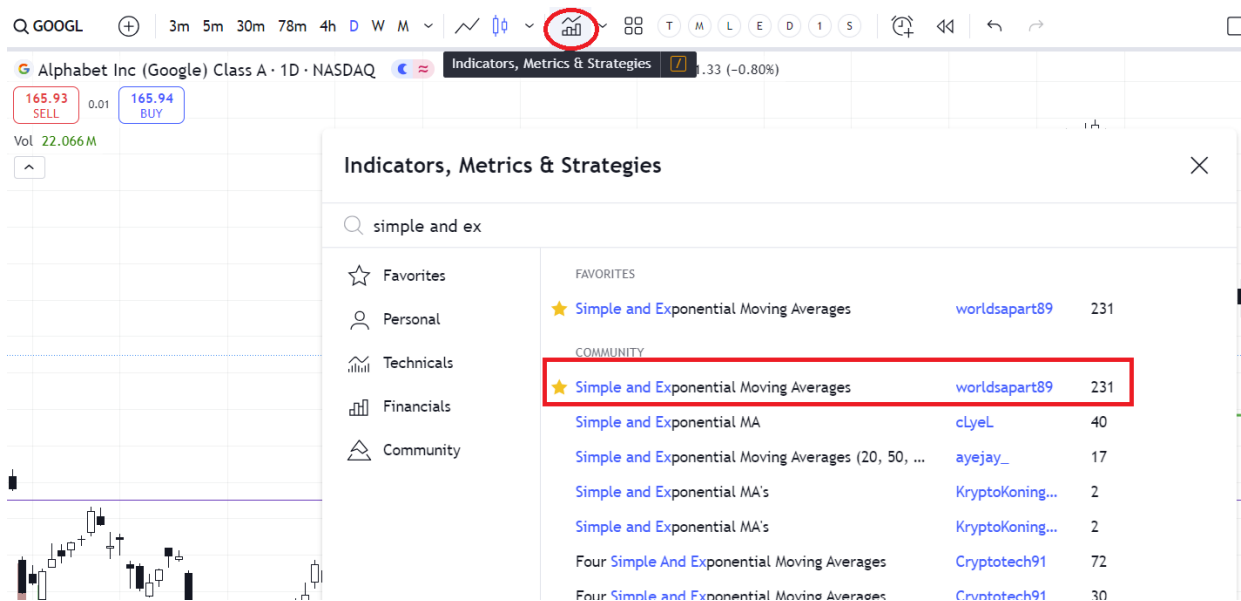
You can choose any colors you like. You'll notice my 100 and 200 simple moving averages are thicker lines. The shorter timeframe EMA's are thinner lines so I recycle the colors.

Make this your own, or copy mine: It's your choice!

Step-by-Step: Setting Up Your Chart

Now, let's get to the steps of setting up your TradingView to mirror mine.

(This assumes you signed up and you are logged into your account.)



1. Add the Moving Averages

- Click on "Indicators, Metrics, and Strategies" (as shown in the red circle above).
- Type "Simple and Ex" in the search bar.
- Select "Simple and Exponential Moving Averages" by worldsapart89 (red box above).



2. Customize the Indicator

- Click the gear icon to open settings (as shown by the red circle above)

SMA and EMAs ×

Inputs Style Visibility

SMA #1 100

SMA Source #1 close

SMA #2 200

SMA Source #2 close

SMA #3 1

SMA Source #3 close

SMA #4 1

SMA Source #4 close

SMA #5 200

SMA Source #5 close

EMA #1 10

EMA Source #1 close

Defaults Cancel Ok

Click on the the **Inputs** tab:

- **SMA 1**: Enter 100

- **SMA 2**: Enter 200

- **EMA 1**: Enter 10

(You can leave sma 3, 4 and 5 with the defaults)

Scroll Down

Inputs Style Visibility

SMA #5 200

SMA Source #5 close

EMA #1 10

EMA Source #1 close

EMA #2 20

EMA Source #2 close

EMA #3 50

EMA Source #3 close

EMA #4 1

EMA Source #4 close

EMA #5 2

EMA Source #5 close

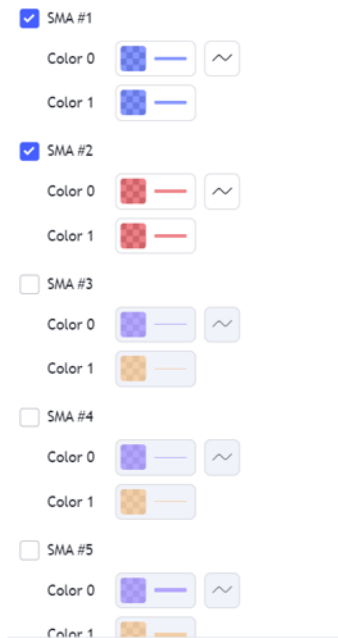
Change the values for:

- **EMA 2**: Enter 20

- **EMA 3**: Enter 50

(You can leave EMA 4 and 5 with the defaults)

Click On the **Style** tab:



-**SMA 1**: Blue (for both), make it a thick line

- **SMA 2**: Red (for both), make it a thick line

Uncheck SMA 3, 4 and 5.



www.goodkidstrading.com


Scroll down to the EMA's

SMA's and EMAs ×



Inputs **Style** Visibility


EMA #1

Color 0  



Color 1 


EMA #2

Color 0  



Color 1 


EMA #3

Color 0  



Color 1 


EMA #4

Color 0  

Color 1 

EMA #5

Color 0  

Color 1 

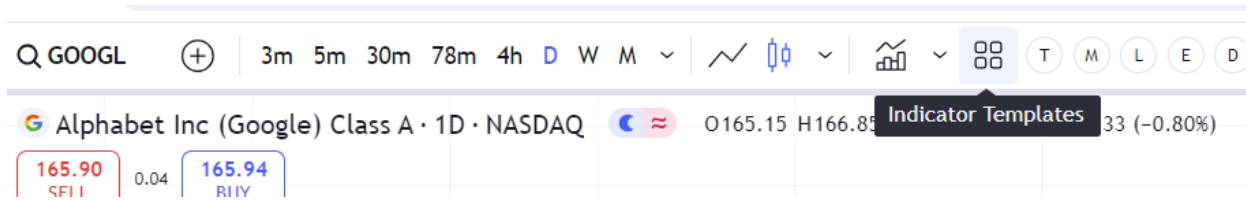
Defaults ▼ Cancel Ok

Change the following:

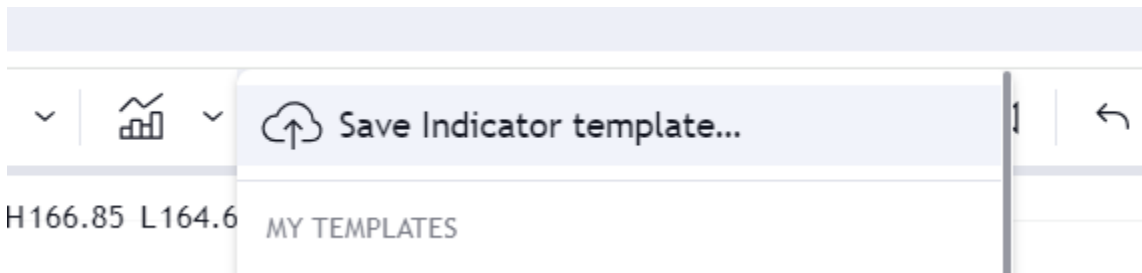
- **EMA 1:** Red (for both), choose the thin line
- **EMA 2:** Blue (for both), choose the thin line
- **EMA 3:** Green (for both), choose the thin line
- Uncheck EMA 4, 5
- Click Ok

3. Save Your Template

- Click on “Indicator Templates” (as shown below).



- Select “Save Indicator Template” (as shown below).



- Name it something memorable, like **GKT** (I don’t save the symbol or interval) and click save.

Save Indicator Template ×

TEMPLATE NAME

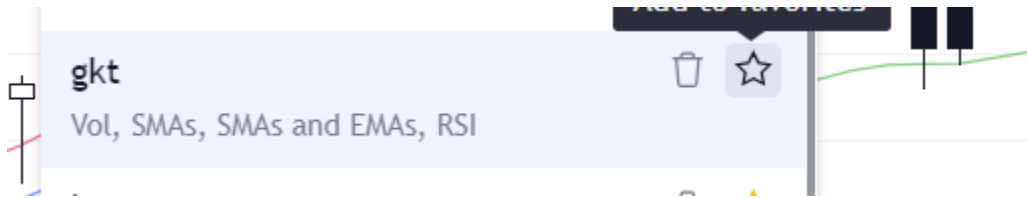
Remember Symbol ⓘ

Remember Interval ⓘ

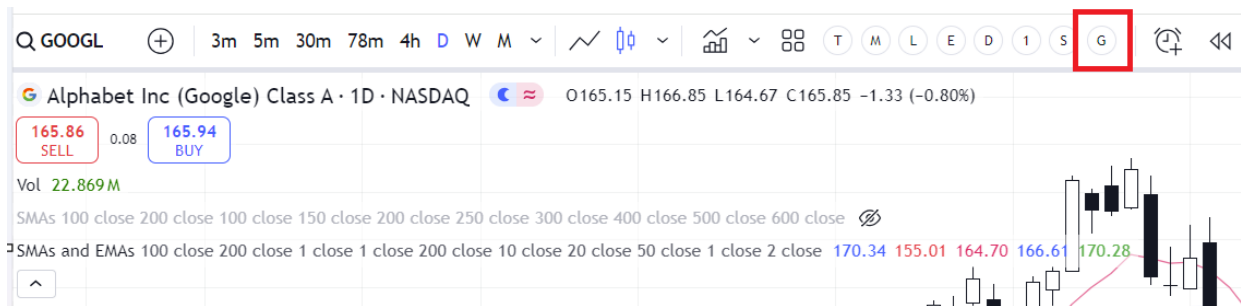
SAVED INDICATORS

Vol, SMAs, SMAs and EMAs, RSI

Click on the indicator templates again (like we did at the start of 3) , and click the star next to GKT



This saved it as a favorite, now you can see this template on your main screen.



That's it!

Congrats! You've just set up your Moving Averages in TradingView like \$Maxwell's charts. Remember, no indicators works 100% of the time—if you haven't read my blog on moving averages check it out!

If you found this guide helpful, I invite you to join our community:

- **Good Kids Trading Discord:** Connect with other traders, get real-time market updates, and share strategies. [Join here.](#)

- **Mr. Money Maxwell's Inner Circle:** For deeper insights and exclusive content, subscribe to my premium subscription. [Learn more here.](#)

Happy trading good kids! Let's continue to grow together.

-\$Maxwell